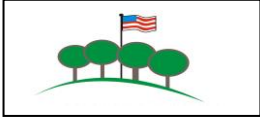


May 2021



LIBERTY GROVE ROCKS

Featured Business

Rowley's Bay Restaurant
1041 County Rd ZZ
Ellison Bay, WI 54210
920-854-2385
frontdesk@rowleysbayresort.com

Important Dates

May 19th- Town Board Meeting 7pm
June 2nd-Town Board Meeting 7 pm
June 16th- Town Board Meeting 7 pm

**All meetings will be held via Zoom – check
the agenda for details on how to join**

From your Town Chairman

Supervisor Lou Covotsos has informed the Board and Administration that he and his wife have sold their home and will be moving to Florida. Lou and Daniele have been active and valuable members of our community. They will truly be missed, and we wish them all the best in this new chapter of their lives.

Lou has personified the leadership as described by Dan Zadra, in his service on the Board and various committees. "The best leaders are not interested in selling their own ideas, but in finding the best ideas. They are not in having their own way, but in finding the best way." On behalf of myself, the Board, Administration, and Community I want to sincerely thank him.

Thank you Lou

The Board has approved new sewer and water rates for the Town Utility District based on the information provided by the Village of Sister Bay. A small portion of the Town receives sewer and water from the Village.

Restrooms in the Town Parks will be open to the public this year. The Board is considering opening various Town facilities on a month-to-month basis due to the COVID-19 pandemic. Our Emergency Health Declaration remains in effect and is set to expire at the end of September.

From your Town Board

The Annual meeting was held on April 20th at 7:00pm. John Lowry was sworn in as Chairman and Cathy Ward and Nancy Goss as Supervisors.

Disposal of Structures at 12695 & 12689 Highway 42 – John Lowry stated that this is before the Electors as a recommendation of the Mariners Park Development Ad hoc Committee which feels the current structures will not fit into any future plans for the park. **Cathy Ward moved, Paul Schwengel second** to approve disposal of the structures at 12695 & 12689 Highway 42. Passed with hand vote 29-0.



REMEMBER

A delicious and nutritious lunch is provided by
The Senior Resource Center
At the
Liberty Grove Town Hall

Monday, Wednesday, and Friday
Every week, except on Holidays. **Lunch**
is available for pick up at noon.

Call ****920-746-2523****
24 hours before the
first time you come for lunch.

ORGANIZATIONS IN LIBERTY GROVE

Ellison Bay Service Club

Visit their **Facebook page** to find out the latest news and activities in **Ellison Bay** and **all over Liberty Grove**.

www.facebook.com/ellisonbayserviceclubdc

Door County North-local business organization promoting and supporting this area. www.doorcountynorth.org

Liberty Grove Historical Society- supporting the past, present and future of Liberty Grove.

www.libertygrovehistorical.org

Call for Photos

Liberty Grove Historical Society is redesigning their website with the assistance of Door Guide Publishing. To make the new site as interesting as possible, they need your help.

If you have historical photography of your family members, friends, and events in Liberty Grove, please consider sharing them with LGHS. All you need to do is, contact Door Guide Publishing's John Nelson (by phone or email) and tell him you would like to submit your photos for the new website project. Nelson will arrange to have your photos scanned, which will then be returned to you (unless you decide to donate them to the Liberty Grove Historical Society). *NOTE: We cannot pull photos from your social media pages (such as Facebook and Instagram), as those photos will be much too small for our website purposes.*

Here is the contact information to have your photos scanned:
John Nelson

Cell: (920) 421-1589, [Email: john@doorguidepublishing.com](mailto:john@doorguidepublishing.com)

Thanking you in advance for your interest in Liberty Grove's unique history!

The 18th Annual LGHS Fish Boil Fundraiser at the Viking Grill, Friday June 25th, 2021 4-8pm Just \$20, lowest fish boil price in Door County!

**TO LIVE A CREATIVE LIFE, WE MUST LOSE OUR
FEAR OF BEING WRONG...**

Spring Has Sprung!



NWTC Community Education Classes

To see all the classes/credit classes offered in Sister Bay go to www.nwtc.edu and click on “Find a Class” by location and choose “Learning Innovation Center” in the drop-down box. Learn from home via Zoom, a video meeting platform. You can also call 920-746-4970 for assistance, or contact the Learning and Innovation Center at sisterbay@nwtc.edu

This summer NWTC is planning to offer some community workshops in person. The classes will be small to ensure physical distancing and masks will be required.

We offer in-person American Heart Association CPR, BLS (Basic Life Saving) and First Aid classes on a regular basis. The schedule for the coming months is:

June 29: CPR Heartsaver AED, 8am-noon

June 29: Heartsaver First Aid, 1-5pm

July 26 (6-9pm) and July 27 (6-8:30pm): CPR BLS (Healthcare Providers), two-part class-- both parts required

Give us a call at 920-746-4970 to register.

Door County Library- SB/Liberty Grove

May 11 – Virtual Readers Rampant Book Discussion. Readers Rampant Book Club, “Dead Wake” by Erik Larson

Visit the website calendar for Zoom details. Contact: Christina, 920-854-2721 for details.

Door County Farm Markets

Baileys Harbor (Baileys Harbor Town Hall)

Sundays, 9am–1pm | May 16th-September 26th

Sister Bay (Corner of the Past Museum)

Saturdays, 8am –12pm | June 26th-October 2nd

Ellison Bay (Behind Mink River Basin)

Every other Friday, 4pm-8pm

See informational ad next page

EVERY OTHER
FRIDAY

May 7th, 21st
June 4th, 18th
July 2nd, 16th, 30th
August 13th, 27th

DURING HAPPY HOUR

4pm - 8pm

BEHIND THE
MINK
RIVER
BASIN

Ellison Bay

Locally Produced & Hand Crafted

PRODUCE - JEWELRY - FISH - CANNED GOODS - SOAPS - BAKED GOODS
CANDLES - EGGS - PET TREATS - BREAD - CBD - HEMP - FLOWERS - AND MORE

12010 Highway 42 Ellison Bay WI 54210

Lake Michigan Water Levels

The projected May 7th water levels indicate that all the lakes have increased since last month by 1 to 5 inches. Also, the forecasted May 7th levels for all lakes are below the water levels from this time last year. Lake Superior is 4 inches below last year, Lakes Michigan-Huron, St. Clair, and Erie are 15 inches below last year, and Lake Ontario is 26 inches below last year. All the lakes remain above their long-term monthly average levels, except for Lake Ontario. Projected water levels for June 7th show all the lakes in their seasonal rise and rising by 1 to 3 inches. See our [Daily Levels](#) web page for more water level information.

Electronic Recycling and paper shredding

The next Shredfest is scheduled for Saturday September 11, 9-1pm at the Town of Liberty Grove. Liberty Grove and Sister Bay Residents only.

Outdoor Fires

Having an outdoor fire in the evening is always a fun family event. A portable firepit with a mesh enclosure to capture hot embers is obviously the safest to use.

If you have an open firepit please remember that your fires should be no larger than a fire that you would cook over and should never be left unattended. Grass fires can start easily and get out of hand very quickly. Have a hose or a fire extinguisher nearby for safety.

Building Inspectors

Door County Inspections LLC Building Inspectors.

Office hours- Thursdays 8:30-10:00am or by appointment.

Brett Temme - 920-495-1863- Commercial brett@doorcountyinspections.com

John Dwonch - 920-495-1864- Residential john@doorcountyinspections.com

Liberty Grove Senior Resources

[Aging & Disability Resource Center of Door County](#)

@ THE DOOR COUNTY SENIOR & COMMUNITY CENTER

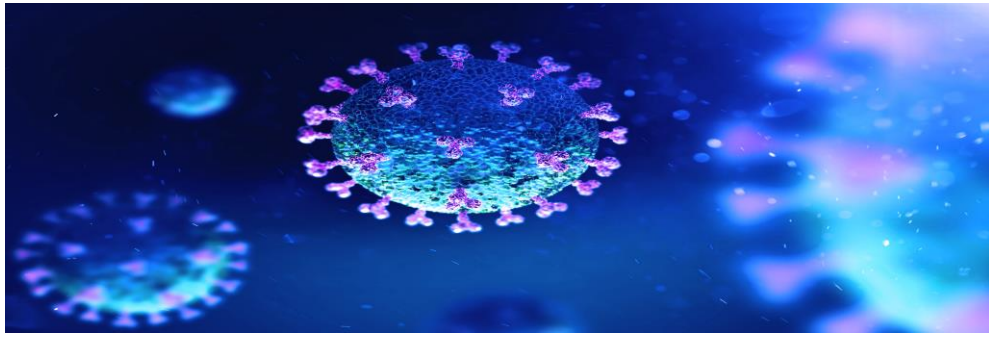
916 N. 14th Ave. • Sturgeon Bay, WI 54235

920-746-ADRC (2372) • Toll free: 855-828-2372

Email: ADRC@co.door.wi.us

Website: www.ADRCDoorCounty.org

Open Monday – Friday 7:00 a.m. to 6:30 p.m. By appointment



COVID-19 Vaccine Updates - Door County

Door County is working diligently with our community partners to provide vaccine safely and effectively to our community.

After an extensive safety review by independent experts, the CDC and the FDA, the pause on the Johnson and Johnson Vaccine has been lifted. Door County Public Health has resumed the use of the Johnson and Johnson Vaccine.

We are now accepting appointments for Pfizer and Johnson and Johnson vaccine clinics in Sturgeon Bay.
To book an appointment visit bookdcph.timetap.com

You will schedule your *first dose only* at this time. Your 2nd dose will be scheduled at the time you receive your first.

[Press Release - April 30, 2021](#)

Vaccine Side Effects

The COVID-19 vaccination will help protect you from getting COVID-19. After your vaccination you may have some side effects, which are normal signs that your body is building protection. These side effects should go away in a few days. Some people experience sore arm, slight fever, or feeling tired, while others have no side effects at all. We recommend for best protection against COVID-19, to get both doses of the vaccine, even if you have side effects after the first dose.

IF YOU NEED ASSISTANCE Emergency assistance - Dial 911, Door County Medical Center COVID Hotline: 920-746-3700



Door County Public Health Event Planner Safety Assessment

Large events and mass gatherings can contribute to the spread of COVID-19. The purpose of this tool is to assist those planning and hosting events in making decisions during the COVID-19 pandemic. The risk of COVID-19 spreading at events and gatherings increases as follows:

- Lower Risk:Virtual-only activities, events, and gatherings.
 - More Risk:Smaller outdoor gathering in which individuals from different households remain spaced at least 6 feet apart, wear cloth face coverings, do not share objects, and come from the same local area (e.g., a community, town, city, or county)
 - Higher Risk:Medium-sized in-person gatherings that are organized/laid out to allow individuals to remain spaced at least 6 feet apart, some wear cloth face coverings and some come from outside the local area (e.g., a community, town, city, or county).
 - Highest Risk:Large in-person gatherings where it is difficult for individuals to remain spaced at least 6 feet apart, individuals do not wear cloth face coverings and many travel from outside the local area.
- CDC: <https://www.cdc.gov/coronavirus/2019-ncov/community/large-events/considerations-for-events-gatherings.html>
- Wisconsin DHS: <https://www.dhs.wisconsin.gov/covid-19/community.htm>

Considerations Before Holding an Event

- ✓Strongly consider whether the benefits of an in person gathering outweigh the risks of COVID-19 spreading in our community.
- ✓Is COVID-19transmission in the county and immediately surrounding counties none to minimal?
- ✓Events that last longer pose more risk than shorter events.
- ✓Events where people engage in behaviors such as singing, shouting, not maintaining physical distancing, or not wearing masks consistently and correctly, can increase risk.
- ✓Travel to the event from those who do not live in our community increases risk
- ✓Do medical and public health systems in the county and immediately surrounding counties have the capacity to respond to an outbreak?(<https://www.dhs.wisconsin.gov/covid-19/disease.htm>)
- ✓Are you prepared to cancel the event and tell attendees if there has been an outbreak or increased community spread?

Recommended Health and Safety Actions

✓Modify layouts BEFORE event

☐Adjust size of event to allow distancing between different households (at least 6ft)

☐Install physical barriers, such as sneeze guards, where distancing is difficult

☐Stagger entrances and exits

☐Space seats and patrons 6ft from each other

☐Limit the formation of lines by changing and adding markings on the floor, such as tape or barriers

If your event will involve high risk activities from above, our county's disease prevalence is high, or our local and/or surrounding hospital capacity is low, Door County Public Health discourages you from holding the event.

✓Promote healthy hygiene practices and have the following available:

☐Hand washing stations

☐Hand sanitizer (at least 60% alcohol)

☐Disposable masks

☐No touch garbage bins

☐Procedure for frequent cleaning and disinfecting

✓Limit food and beverage

☐No self-serving buffet

☐Space lines

☐Close water fountains and only allow water bottles

☐Consider prepacked food options

☐Use pre-packaged utensils

☐Use single serve condiments

Ongoing Monitoring and Messaging

✓ Train all staff on health and safety protocols, educate them on disease signs and symptoms, and discourage them from coming to the event if they have any symptoms.

✓ Add messaging on your event website, in emails, and at your event telling attendees that you will be following COVID-19 safety precautions such as:

☐ Requiring face coverings

☐ Social distancing

☐ Washing hands regularly

☐ Do not attend event if ill

✓ If someone develops symptoms during the event, they should leave immediately and seek COVID-19 testing.

✓ Be prepared to work with Door County Public Health and notify attendees if confirmed cases are linked to your event.

If you are unable to comply with all of the above, we advise to not hold the event.

If you are in compliance with all of the above, and hold the event, please continue safety monitoring.

Door County Public Health 920-746-2234 If you have immediate questions, you may contact
Public Health during regular business hours
(Monday-Friday 8:00am-4:30pm)

Guidelines from Door County Public Health Department in regard to large group gatherings remain as follows:

Low Risk Staying at Home	Moderate Risk Gatherings Under 10 People	High Risk Gatherings of 10-50 People	Not Advisable Gatherings of 50 or more
------------------------------------	--	--	--


Risk of COVID-19 spreading at events and gatherings increases as follows:


Lowest Risk	More Risk	Higher Risk	Highest Risk
Virtual-only activities, events, and gatherings.	Smaller outdoor and in-person gatherings in which individuals from different households remain spaced at least 6 feet apart, wear cloth face coverings, do not share objects, and come from the same local area (e.g., community, town, city, or county).	Medium-sized in-person gatherings that are adapted to allow individuals to remain spaced at least 6 feet apart and with attendees coming from outside the local area.	Large in-person gatherings where it is difficult for individuals to remain spaced at least 6 feet apart and attendees travel from outside the local area.

[COVID-19 Travel Recommendations by Country](#)


If you must travel, take these steps to protect yourself & others from COVID-19 during your trip.

PREVENT COVID-19 DURING TRAVEL


 If you travel, take these steps:




Keep Distance & Wear Cloth Face Cover



Wash Hands



Or Use Hand Sanitizer



<https://bit.ly/2IZicXj>

[cdc.gov/coronavirus](https://www.cdc.gov/coronavirus)

CS316358B 04/23/2020

[What is CFDC?](#)

[The Pledge](#)

[Leave No Trace](#)

Join the Movement:
Sign the Door County Pledge

As more and more people discover the Door County region, there is no doubt that the land, the water, the wildlife, and the local culture are feeling the strain.

To help ease this burden, Destination Door County is proud to announce the **Care for Door County** initiative, a sustainability movement designed to inspire both residents and visitors to do their parts to preserve, protect, and care for the region's vast natural resources, cultural treasures, and local communities.

The **Door County Pledge** invites residents, visitors, and all who hold Door County close to their hearts to commit to responsible behaviors such as respecting the natural environment and acting kindly while encouraging exploration of the county with purpose, mindfulness, and care. It does so by focusing on water safety, environmental stewardship, destination awareness, capacity constraints at certain locations and environmental preservation.

Beginning April 20, members of the Door County community (that's you!) can be among the first to join us in kicking off this initiative by digitally signing the **Door County Pledge** [online](#) or in person at the [Door County Welcome Center](#).

Visitors and the rest of the world will be officially invited to sign the pledge later on Earth Day, April 22, 2021.

The **Door County Pledge** is not about limiting what our residents, and visitors, can do, it's about expanding everyone's understanding of the county and helping us realize the role we all play in keeping it the special place it is.

Read the full press release and learn more about Care for Door County [here](#).

Be a trailblazer - show your continued commitment to caring for Door County by signing the Door County Pledge today.

[Take the Pledge](#)

Leave No Trace 7 Principles

When you head outdoors to explore, do so responsibly with these seven principles of sustainable recreation.

[View the Principles >](#)

Partner Resource Toolkit

Logos, sample media posts & emails, printable signs & rack cards can be found here - be proud to embark on this mission with us.

[Access Toolkit >](#)

Share the Pledge on Social

Share the pledge on Facebook! Tell everyone why you signed, and encourage your friends, followers, and patrons to do the same.

[Share on Facebook >](#)

Destination Door County

PO Box 406, 1015 Green Bay Road, Sturgeon Bay, WI 54235
920-743-4456

Destination Door County | PO Box 406, 1015 Green Bay Road, Sturgeon Bay, WI 54235